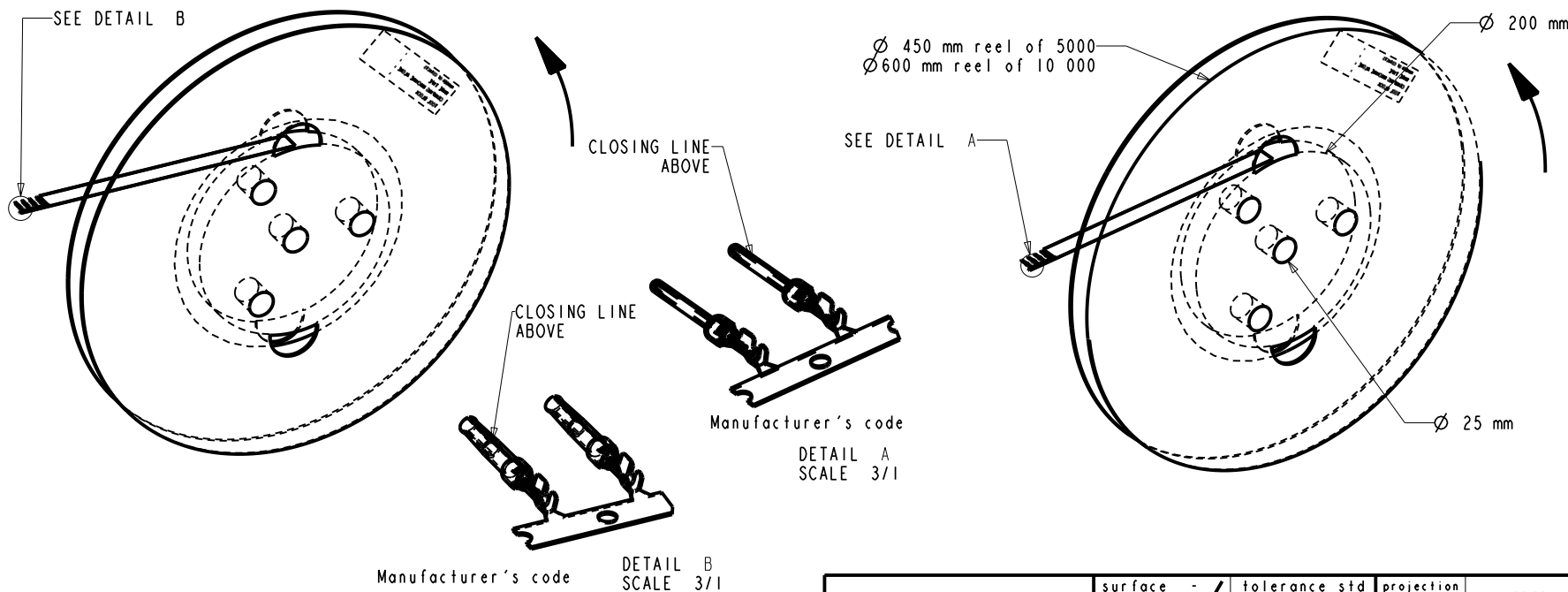


REFERENCE FOR REEL ACCORDING TO FEEDING DIRECTION

GAUGE	REEL OF 5000 FEMALE CONTACTS		REEL OF 10000 FEMALE CONTACTS		GAUGE	REEL OF 5000 PIN CONTACTS		REEL OF 10000 PIN CONTACTS	
# 24-28	-	-	86566540064	86566540064LF	# 24-28	-	-	86564540064	86564540064LF
# 20-24	-	-	-	-	# 20-24	-	-	-	-
# 24-28	86566510065	86566510065LF	86566540065	86566540065LF	# 24-28	86564510065	86564510065LF	86564540065	86564540065LF
# 20-24	86566520065	86566520065LF	86566530065	86566530065LF	# 20-24	86564520065	86564520065LF	86564530065	86564530065LF
# 24-28	86566510067	86566510067LF	86566540067	86566540067LF	# 24-28	86564510067	86564510067LF	86564540067	86564540067LF
# 20-24	86566520067	86566520067LF	86566530067	86566530067LF	# 20-24	86564520067	86564520067LF	86564530067	86564530067LF



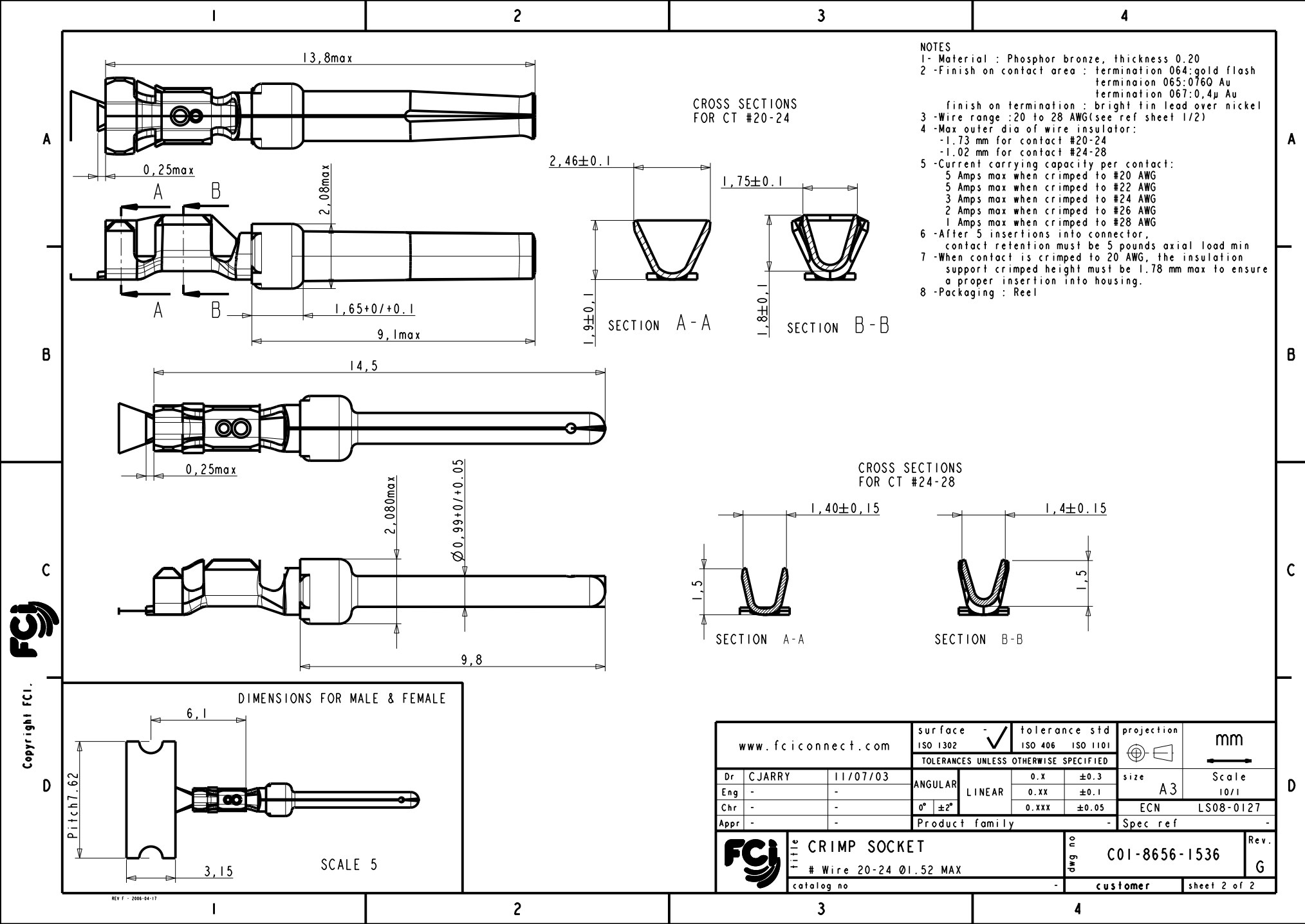
Copyright FCI.

NOTE : ROHS INFORMATIONS
 The LF products meet European union directives and other country regulations as described in GS-22-008
 Terminations plating spec : 2um Nickel min + 2um Sn min
 Packaging Spec : see GS-14-920

rev	ecn no	dr	date
C	LS05-006	MPE	30/05/05
D	LS06-0079	MPE	18/05/2006
E	LS06-196	MPE	27/11/2006
F	LS08-0096	MPE	2008/04/04
G	LS08-0127	MPE	2008/05/13
-	-	-	-
-	-	-	-

www.fciconnect.com		surface -	tolerance std	projection	mm
		ISO 1302	ISO 406 ISO 1101		
TOLERANCES UNLESS OTHERWISE SPECIFIED					
Dr	CJARRY	11/07/03	ANGULAR	LINEAR	size A3 Scale 5/1
Eng	-	-	0.X	±0.3	ECN LS08-0127
Chr	-	-	0.XX	±0.1	
Appr	-	-	0.XXX	±0.05	
Product family			Spec ref		
		title CRIMP SOCKET		dwg no	Rev.
		# Wire 20-24 Ø1.52 MAX		C01-8656-1536	G
catalog no		customer		sheet 1 of 2	

REV F - 2006-04-17



- NOTES**
- 1- Material : Phosphor bronze, thickness 0.20
 - 2 -Finish on contact area : termination 064:gold flash
termination 065:0760 Au
termination 067:0.4μ Au
finish on termination : bright tin lead over nickel
 - 3 -Wire range : 20 to 28 AWG(see ref sheet 1/2)
 - 4 -Max outer dia of wire insulator:
-1.73 mm for contact #20-24
-1.02 mm for contact #24-28
 - 5 -Current carrying capacity per contact:
5 Amps max when crimped to #20 AWG
5 Amps max when crimped to #22 AWG
3 Amps max when crimped to #24 AWG
2 Amps max when crimped to #26 AWG
1 Amps max when crimped to #28 AWG
 - 6 -After 5 insertions into connector,
contact retention must be 5 pounds axial load min
 - 7 -When contact is crimped to 20 AWG, the insulation
support crimped height must be 1.78 mm max to ensure
a proper insertion into housing.
 - 8 -Packaging : Reel

Copyright FCI

www.fciconnect.com		surface - <input checked="" type="checkbox"/>	tolerance std	projection	mm
		ISO 1302	ISO 406 ISO 1101		
TOLERANCES UNLESS OTHERWISE SPECIFIED					
Dr	CJARRY	11/07/03	ANGULAR	size	Scale
Eng	-	-	LINEAR	A3	10/1
Chr	-	-	0° ±2°	ECN	LS08-0127
Appr	-	-	Product family	Spec ref	-
	title CRIMP SOCKET			dwg no	Rev.
	# Wire 20-24 Ø1.52 MAX			C01-8656-1536	G
	catalog no		customer	sheet 2 of 2	